

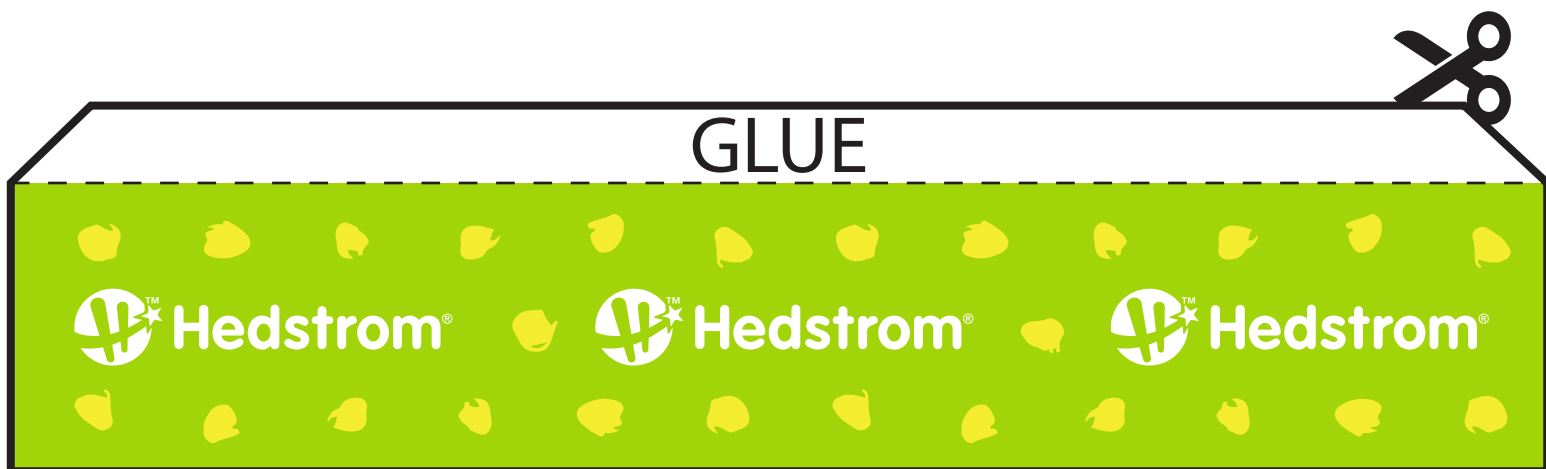
Christmas Race

Directions: You will need scissors and glue to assemble this game. Start by cutting out both the presents and straw cutting on the thick black line. Fold along the dotted lines to make a 3D box and straw. Glue the flaps to the inside of the box and straw.

Let dry for a couple hours and you are ready to play!

How to Play: You and a friend will line the two presents up at the end of the table. Taking your straw, you will then blow your present to the end of the table. Whoever blows their present off first wins. Take turns playing with your family!

Straws



imagine
the fun

[f @hedstromtoys](https://www.facebook.com/hedstromtoys)

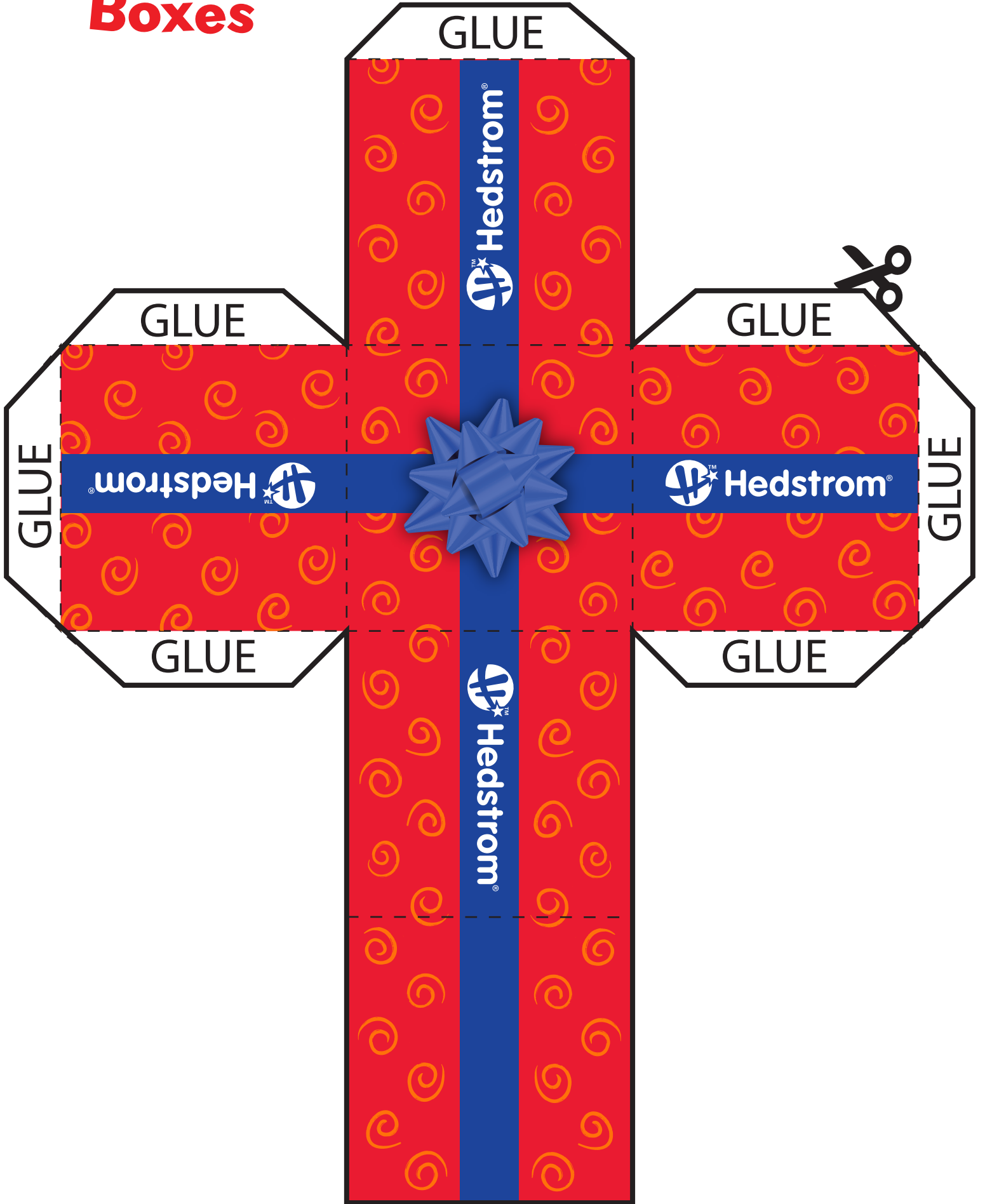
[@hedstromtoys](https://www.instagram.com/hedstromtoys)

[a /hedstrom](https://www.amazon.com/hedstrom)

[hedstrom.com](https://www.hedstrom.com)

 Hedstrom®

Boxes



Boxes

